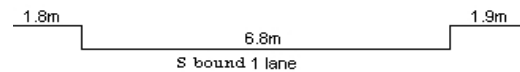
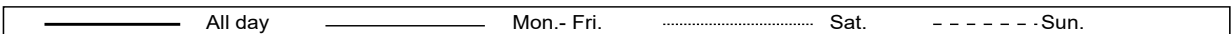
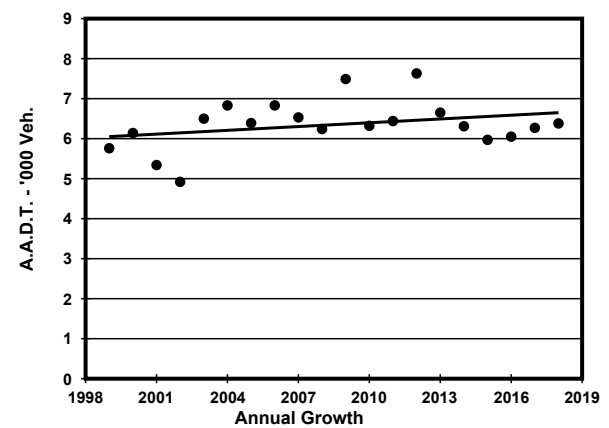
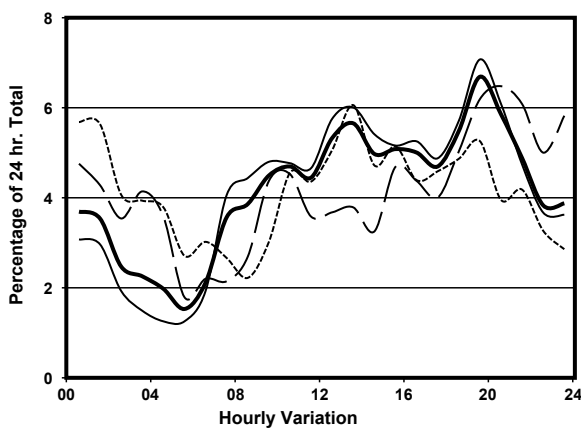
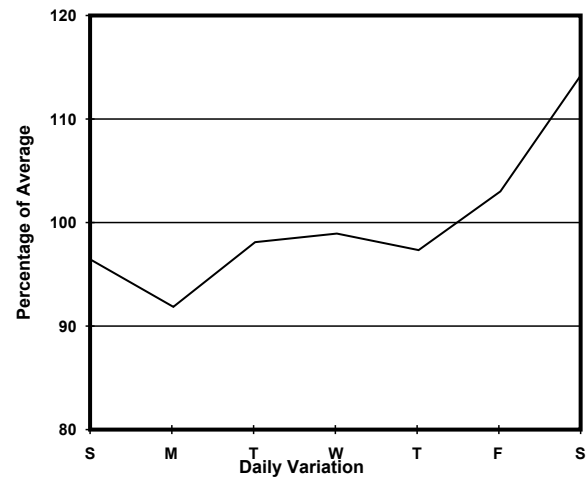
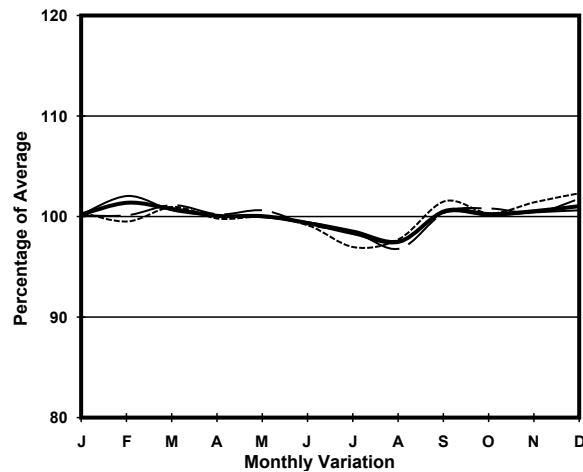


YEAR 2018  
 COVERAGE (B) STATION 2404  
 ROAD NETWORK MINOR  
 ROAD TYPE LOCAL DISTRIBUTOR

LINK D'AGUILAR ST (from QUEEN'S RD C to WYNDHAM ST)



## 1. TRAFFIC FLOW VARIATION AND GROWTH



## 2. TRAFFIC CHARACTERISTICS (BY DIRECTION)

Parameter	All - Day	Mon. - Fri.	Sat.	Sun.
<b>SOUTH BOUND</b>				
A.A.D.T.	6380	6250	7310	6160
R 12 / 24 - %	57.3	60.9	46.1	51.6
R 16 / 24 - %	78.5	82.5	69.9	68.3
AM Peak Hour	0900-1000	0900-1000	0900-1000	0900-1000
One-way flow at AM peak hour	290	300	320	190
T - % (AM)	-	11.9	-	-
PM Peak Hour	1800-1900	1800-1900	1800-1900	1800-1900
One-way flow at PM peak hour	350	360	370	300
T - % (PM)	-	7.3	-	-
Prop.of commercial vehicles - 16 hr.	-	7.9	-	-
 A.A.D.T.	-	-	-	-
R 12 / 24 - %	-	-	-	-
R 16 / 24 - %	-	-	-	-
AM Peak Hour	-	-	-	-
One-way flow at AM peak hour	-	-	-	-
T - % (AM)	-	-	-	-
PM Peak Hour	-	-	-	-
One-way flow at PM peak hour	-	-	-	-
T - % (PM)	-	-	-	-
Prop.of commercial vehicles - 16 hr.	-	-	-	-

## 3. OTHER INFORMATION AND COMMENT

**4. Vehicle classification and occupancy - Monday to Friday**

Time		Class of vehicle									
		Motor Cycle	Private Car	Taxi	Private LB	PLB	Goods veh.		Non Fr. Bus	Fr. Bus	
							Light	M & H		SD	DD
0700-0800	Pro	3.9	15.7	54.9	0.0	0.0	13.7	3.9	0.0	5.9	2.0
	Ocp	1.0	1.6	1.5	0.0	0.0	1.3	1.5	0.0	18.5	15.3
0800-0900	Pro	5.5	20.0	47.3	0.0	1.8	16.4	1.8	0.0	5.0	2.3
	Ocp	1.0	1.2	1.5	0.0	7.0	2.1	3.0	0.0	27.9	15.2
0900-1000	Pro	0.0	19.1	45.9	0.0	0.0	23.0	3.8	1.9	4.8	1.4
	Ocp	0.0	1.1	2.0	0.0	0.0	1.9	1.5	5.0	21.9	18.3
1000-1100	Pro	4.5	27.3	36.4	0.0	0.0	24.2	1.5	0.0	3.4	2.7
	Ocp	1.0	1.3	1.7	0.0	0.0	1.5	1.0	0.0	6.3	6.9
1100-1200	Pro	11.9	30.6	17.0	0.0	0.0	28.9	5.1	0.0	4.3	2.1
	Ocp	1.0	1.1	1.9	0.0	0.0	1.2	1.0	0.0	8.8	7.4
1200-1300	Pro	8.6	36.6	30.1	0.0	0.0	17.2	0.0	0.0	5.4	2.2
	Ocp	1.0	1.5	2.0	0.0	0.0	1.5	0.0	0.0	7.7	9.8
1300-1400	Pro	10.9	35.8	20.2	0.0	0.0	26.5	1.6	0.0	3.9	1.2
	Ocp	1.0	1.2	2.2	0.0	0.0	1.7	1.0	0.0	7.5	10.3
1400-1500	Pro	1.8	37.3	32.0	0.0	0.0	21.3	1.8	0.0	3.6	2.2
	Ocp	1.0	1.3	2.3	0.0	0.0	1.3	2.0	0.0	10.0	7.0
1500-1600	Pro	2.2	51.6	23.7	0.0	0.0	12.9	2.2	0.0	4.8	2.7
	Ocp	1.0	1.2	2.2	0.0	0.0	1.2	1.0	0.0	9.3	3.8
1600-1700	Pro	5.2	46.5	15.5	0.0	0.0	23.2	0.0	0.0	7.1	2.6
	Ocp	1.0	1.4	2.8	0.0	0.0	1.4	0.0	0.0	10.4	6.3
1700-1800	Pro	5.7	32.2	30.3	0.0	0.0	24.6	0.0	0.0	5.2	1.9
	Ocp	1.0	1.4	1.9	0.0	0.0	1.2	0.0	0.0	11.5	12.0
1800-1900	Pro	17.0	30.9	44.8	0.0	0.0	0.0	1.5	0.0	3.9	1.9
	Ocp	1.0	1.1	2.2	0.0	0.0	0.0	2.0	0.0	18.1	17.0
1900-2000 Peak hour	Pro	9.1	40.8	43.1	0.0	0.0	3.4	0.0	0.0	2.8	0.9
	Ocp	1.0	1.3	2.2	0.0	0.0	1.3	0.0	0.0	20.0	17.3
2000-2100	Pro	8.8	34.1	52.7	0.0	0.0	0.0	1.1	0.0	2.5	0.8
	Ocp	1.0	1.7	2.4	0.0	0.0	0.0	1.0	0.0	13.3	9.0
2100-2200	Pro	12.5	21.4	57.1	0.0	0.0	1.8	0.0	1.8	4.0	1.3
	Ocp	1.0	1.2	2.4	0.0	0.0	1.0	0.0	1.0	14.3	6.3
2200-2300	Pro	3.0	42.4	36.4	0.0	0.0	6.1	0.0	3.0	6.8	2.3
	Ocp	1.0	1.6	2.3	0.0	0.0	1.5	0.0	1.0	11.1	7.7
16 hours	Pro	7.4	32.4	37.9	0.0	0.1	14.3	1.5	0.3	4.3	1.8
	Ocp	1.0	1.3	2.1	0.0	7.0	1.5	1.4	2.3	13.8	10.3

**Legend**

**Pro.** Proportion of vehicles in % (Sum may not add up to 100% due to figure rounding)\*

**Ocp.** Average occupancy of vehicles including both driver and passengers\*

**M&H** Medium and Heavy

**\*** All traffic data are collected from combined bounds except for one way traffic